

Software Introduction

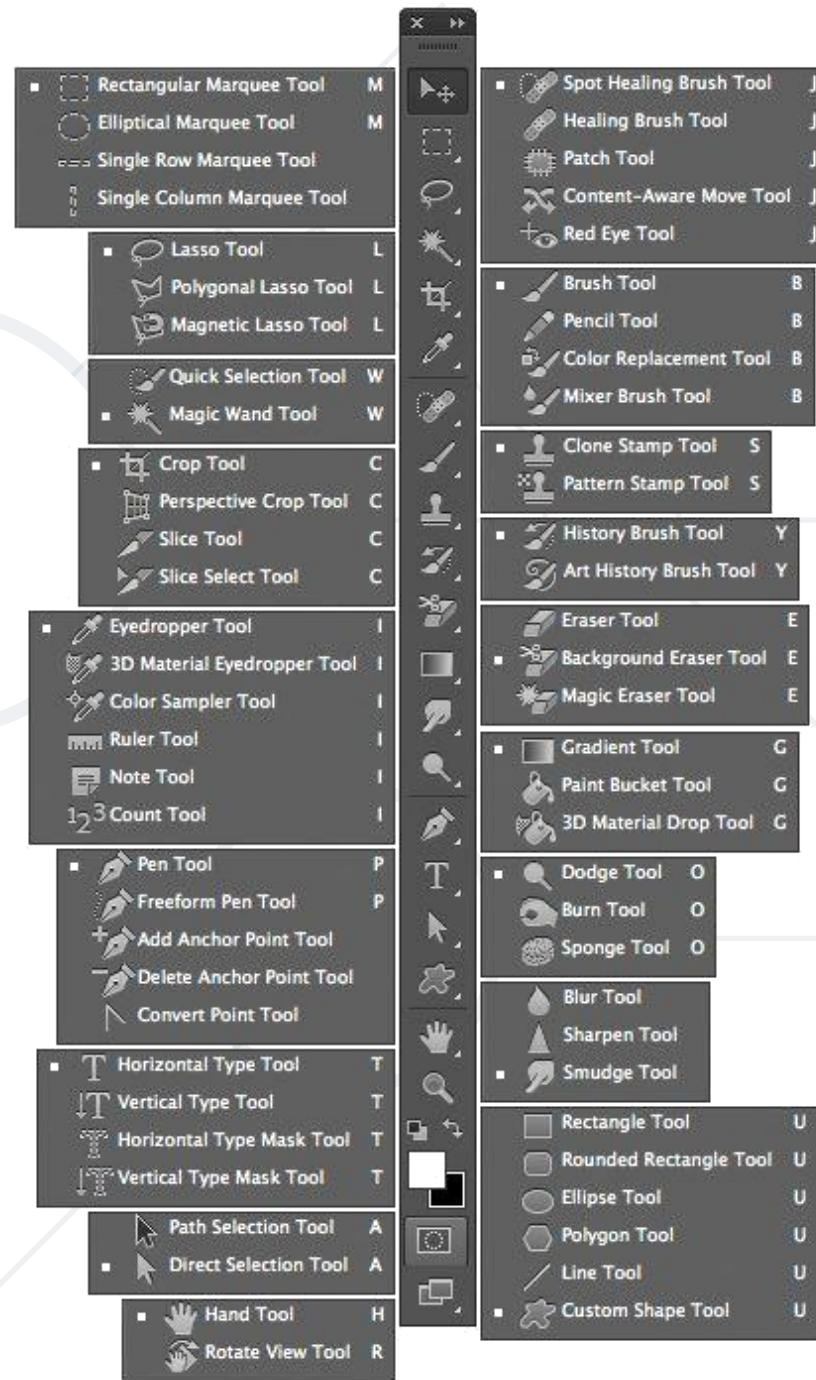


The Toolbar

Here you can see all the available tools.

The Toolbar can be modified through Edit>Toolbar

On the next several slides you can see each tool with its' description



Move And Selection Tools



Move Tool (V)

The Move Tool is used to move layers, selections and guides within a Photoshop document. Enable "Auto-Select" to automatically select the layer or group you click on.



Artboard Tool (V)

The Artboard Tool (new in Photoshop CC) allows you to easily design multiple web or UX (user experience) layouts for different devices or screen sizes.



Rectangular Marquee Tool (M)

The Rectangular Marquee Tool draws rectangular selection outlines. Press and hold Shift as you drag to draw a square selection.



Elliptical Marquee Tool (M)

The Elliptical Marquee Tool draws elliptical selection outlines. Press and hold Shift to draw a selection in a perfect circle.



Single Row Marquee Tool

The Single Row Marquee Tool in Photoshop selects a single row of pixels in the image from left to right.



Single Column Marquee Tool

Use the Single Column Marquee Tool to select a single column of pixels from top to bottom.



Lasso Tool (L)

With the Lasso Tool, you can draw a freeform selection outline around an object.



Polygonal Lasso Tool (L)

Click around an object with the Polygonal Lasso Tool to surround it with a polygonal, straight-edged selection outline.



Magnetic Lasso Tool (L)

The Magnetic Lasso Tool snaps the selection outline to the edges of the object as you move your mouse cursor around it.



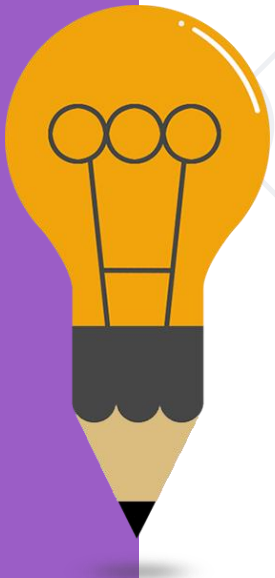
Quick Selection Tool (W)

The Quick Selection Tool lets you easily select an object simply by painting over it with a brush. Enable "Auto-Enhance" in the Options Bar for better quality selections.



Magic Wand Tool (W)

Photoshop's Magic Wand Tool selects areas of similar color with a single click. The "Tolerance" value in the Options Bar sets the range of colors that will be selected.



Crop And Slice Tools



Crop Tool (C)

Use the Crop Tool in Photoshop to crop an image and remove unwanted areas. Uncheck "Delete Cropped Pixels" in the Options Bar to crop an image non-destructively.



Perspective Crop Tool (C)

Use the Perspective Crop Tool to both crop an image and fix common distortion or perspective problems.



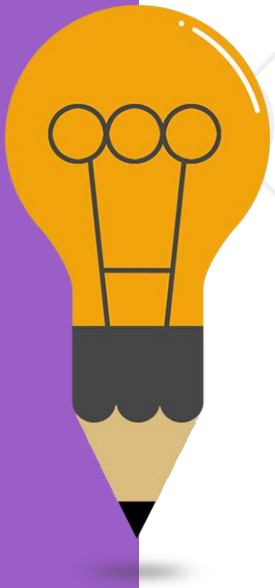
Slice Tool (C)

The Slice Tool divides an image or layout into smaller sections (slices) which can be exported and optimized separately.

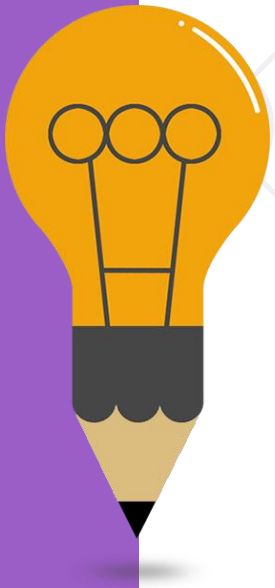


Slice Select Tool (C)

Use the Slice Select Tool to select individual slices created with the Slice Tool.



Measurement Tools



Eyedropper Tool (I)

Photoshop's Eyedropper Tool samples colors in an image. Increase "Sample Size" in the Options Bar for a better representation of the sampled area's color.



3D Material Eyedropper Tool (I)

Use the 3D Material Eyedropper Tool to sample material from a 3D model in Photoshop.



Color Sampler Tool (I)

The Color Sampler Tool displays color values for the selected (sampled) area in an image. Up to four areas can be sampled at a time. View the color information in Photoshop's Info panel.



Ruler Tool (I)

The Ruler Tool measures distances, locations and angles. Great for positioning images and elements exactly where you want them.



Note Tool (I)

The Note Tool allows you to attach text-based notes to your Photoshop document, either for yourself or for others working on the same project. Notes are saved as part of the .PSD file.



Count Tool (I)

Use the Count Tool to manually count the number of objects in an image, or to have Photoshop automatically count multiple selected areas in the image.

Retouching And Painting Tools



Spot Healing Brush Tool (J)

The Spot Healing Brush in Photoshop quickly removes blemishes and other minor problem areas in an image. Use a brush size slightly larger than the blemish for best results.



Healing Brush Tool (J)

The Healing Brush lets you repair larger problem areas in an image by painting over them. Hold Alt (Win) / Option (Mac) and click to sample good texture, then paint over the problem area to repair it.



Patch Tool (J)

With the Patch Tool, draw a freeform selection outline around a problem area. Then repair it by dragging the selection outline over an area of good texture.



Content-Aware Move Tool (J)

Use the Content-Aware Move Tool to select and move part of an image to a different area. Photoshop automatically fills in the hole in the original spot using elements from the surrounding areas.



Red Eye Tool (J)

The Red Eye Tool removes common red eye problems in a photo resulting from camera flash.



Brush Tool (B)

The Brush Tool is Photoshop's primary painting tool. Use it to paint brush strokes on a layer or on a layer mask.



Pencil Tool (B)

The Pencil Tool is another of Photoshop's painting tools. But while the Brush Tool can paint soft-edge brush strokes, the Pencil Tool always paints with hard edges.



Color Replacement Tool (B)

Use the Color Replacement Tool in Photoshop to easily replace the color of an object with a different color.



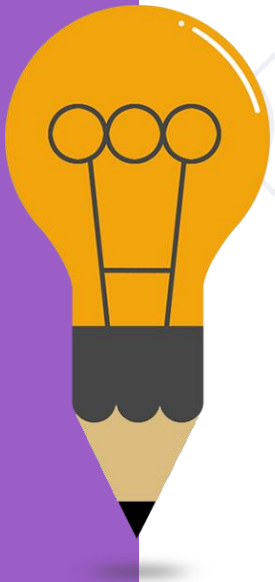
Mixer Brush Tool (B)

Unlike the standard Brush Tool, the Mixer Brush in Photoshop can simulate elements of real painting such as mixing and combining colors, and paint wetness.



Clone Stamp Tool (S)

The Clone Stamp Tool is the most basic of Photoshop's retouching tools. It samples pixels from one area of the image and paints them over pixels in another area.



Retouching And Painting Tools (continued)



Pattern Stamp Tool (S)

Use the Pattern Stamp Tool to paint a pattern over the image.



History Brush Tool (Y)

The History Brush Tool paints a snapshot from an earlier step (history state) into the current version of the image. Choose the previous state from the History panel.



Art History Brush Tool (Y)

The Art History Brush also paints a snapshot from an earlier history state into the image, but does so using stylized brush strokes.



Eraser Tool (E)

The Eraser Tool in Photoshop permanently erases pixels on a layer. It can also be used to paint in a previous history state.



Background Eraser Tool (E)

The Background Eraser Tool erases areas of similar color in an image by painting over them.



Magic Eraser Tool (E)

The Magic Eraser Tool is similar to the Magic Wand Tool in that it selects areas of similar color with a single click. But the Magic Eraser Tool then permanently deletes those areas.



Gradient Tool (G)

Photoshop's Gradient Tool draws gradual blends between multiple colors. The Gradient Editor lets you create and customize your own gradients.



Paint Bucket Tool (G)

The Paint Bucket Tool fills an area of similar color with your Foreground color or a pattern. The "Tolerance" value determines the range of colors that will be affected around the area where you clicked.



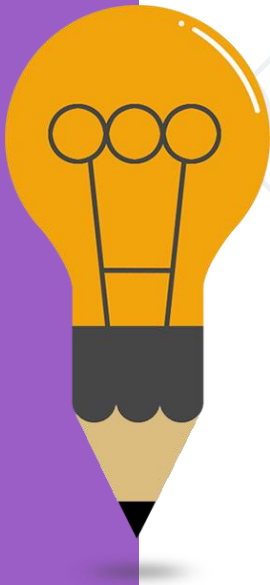
3D Material Drop Tool (G)

Used in 3D modeling, the 3D Material Drop Tool lets you sample a material from one area and then drop it into another area of your model, mesh or 3D layer.

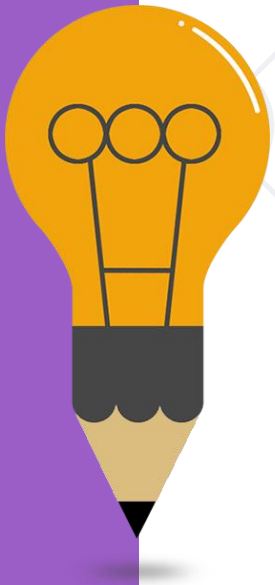


Blur Tool

The Blur Tool blurs and softens areas you paint over with the tool.



Retouching And Painting Tools (continued)



Sharpen Tool

The Sharpen Tool sharpens areas you paint over.



Smudge Tool

The Smudge Tool in Photoshop smudges and smears the areas you paint over. It can also be used to create a finger painting effect.



Dodge Tool (O)

Paint over areas in the image with the Dodge Tool to lighten them.



Burn Tool (O)

The Burn Tool will darken the areas you paint over.



Sponge Tool (O)

Paint over areas with the Sponge Tool to increase or decrease color saturation.

Retouching And Painting Tools



Pen Tool (P)

Photoshop's Pen Tool allows you to draw extremely precise paths, vector shapes or selections.



Freeform Pen Tool (P)

The Freeform Pen Tool allows you to draw freehand paths or shapes. Anchor points are automatically added to the path as you draw.



Add Anchor Point Tool

Use the Add Anchor Point Tool to add additional anchor points along a path.



Delete Anchor Point Tool

Click on an existing anchor point along a path with the Delete Anchor Point Tool to remove the point.



Convert Point Tool

On a path, click on a smooth anchor point with the Convert Point Tool to convert it to a corner point. Click a corner point to convert it to a smooth point.



Horizontal Type Tool (T)

Known simply as the Type Tool in Photoshop, use the Horizontal Type Tool to add standard type to your document.



Vertical Type Tool (T)

The Vertical Type Tool adds type vertically from top to bottom.



Vertical Type Mask Tool (T)

Rather than adding editable text to your document, the Vertical Type Mask Tool creates a selection outline in the shape of vertical type.



Horizontal Type Mask Tool (T)

Like the Vertical Mask Type Tool, the Horizontal Type Mask Tool creates a selection outline in the shape of type. However, the type is added horizontally rather than vertically.



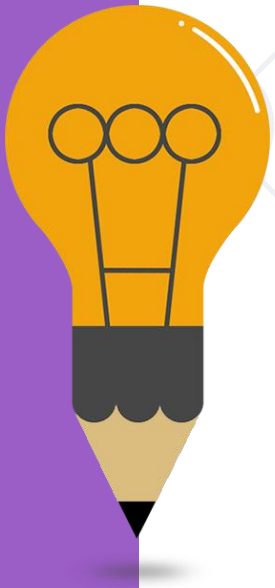
Path Selection Tool (A)

Use the Path Selection Tool (the black arrow) in Photoshop to select and move an entire path at once.

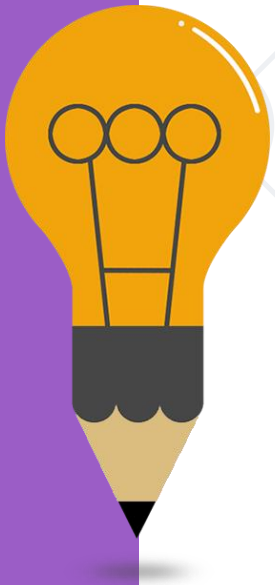


Direct Selection Tool (A)

Use the Direct Selection Tool (the white arrow) to select and move an individual path segment, anchor point or direction handle.



Retouching And Painting Tools (continued)



Rectangle Tool (U)

The Rectangle Tool draws rectangular vector shapes, paths or pixel shapes. Press and hold Shift as you drag to force the shape into a perfect square.



Rounded Rectangle Tool (U)

The Rounded Rectangle Tool is similar to the standard Rectangle Tool but draws the shapes with rounded corners. Press and hold Shift to draw a square with rounded corners.



Ellipse Tool (U)

The Ellipse Tool draws elliptical vector shapes, paths or pixel shapes. Press and hold Shift as you drag to draw a perfect circle.



Polygon Tool (U)

The Polygon Tool draws polygonal, straight-edged vector shapes, paths or pixel shapes. Use the "Sides" option in the Options Bar to set the number of sides.



Line Tool (U)

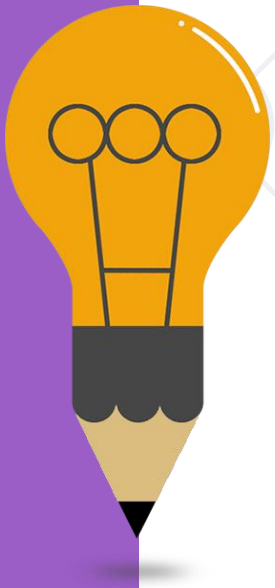
The Line Tool draws straight lines, either as shapes or paths. The "Weight" option in the Options Bar controls the width of the line.



Custom Shape Tool (U)

Photoshop's Custom Shape Tool lets you select and draw custom shapes. Choose from Photoshop's built-in custom shapes or create your own.

Navigation Tools



Hand Tool (H)

The Hand Tool lets us click and drag an image around on the screen to view different areas when zoomed in.



Rotate View Tool (R)

Use the Rotate View Tool in Photoshop to rotate the canvas so you can view and edit the image from different angles.



Zoom Tool (Z)

Click on the image with the Zoom Tool to zoom in on a specific area. Press and hold Alt (Win) / Option (Mac) and click with the Zoom Tool to zoom out.